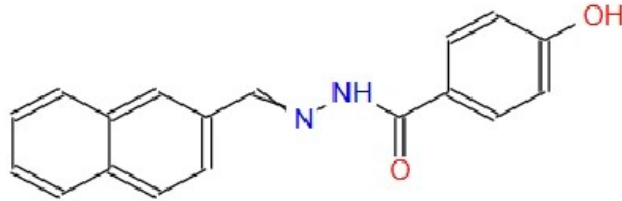


Certificate of Analysis

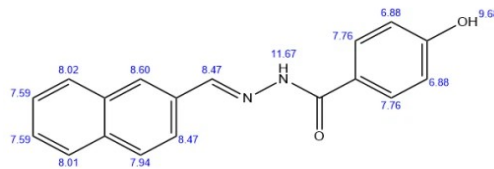
| | |
|--------------------|-----------------------------|
| Compound name | SLU-PP-332 |
| Grade | Pharmaceutical grade |
| CAS No. | 303760-60-3 |
| Quantity | 55g |
| Packaging standard | PE bag+Al foil bag |
| Manufacturer | Shaanxi BLOOM TECH Co., Ltd |
| Lot No. | 202512090051 |
| MFG | Dec 9th 2025 |
| EXP | Dec 8th 2028 |

Structure

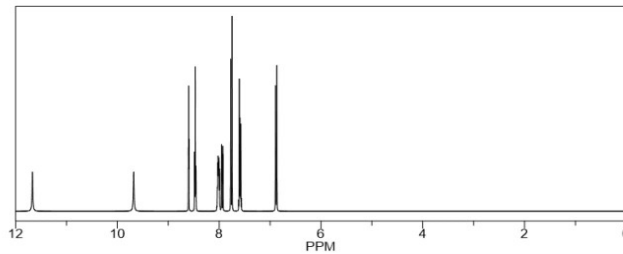


| Item | Enterprise standard | Analysis result |
|-----------------------|--|-----------------|
| Appearance | White or almost white powder | Conformed |
| Water content | ≤5.0% | 0.27% |
| Loss on drying | ≤1.0% | 0.26% |
| Heavy Metals | Pb≤0.5ppm | N.D. |
| | As≤0.5ppm | N.D. |
| | Hg≤0.5ppm | N.D. |
| | Cd≤0.5ppm | N.D. |
| Purity (HPLC) | ≥99.0% | 99.90% |
| Single impurity | <0.8% | 0.33% |
| Total microbial count | ≤750cfu/g | 89 |
| E. Coli | ≤2MPN/g | N.D. |
| Salmonella | N.D. | N.D. |
| Ethanol (by GC) | ≤5000ppm | 300ppm |
| Storage | Store in a sealed, dark, and dry place below 2-8°C | |

ChemNMR ¹H Estimation



Estimation quality is indicated by color: good, medium, rough



Conclusion: This batch of product meets our enterprise standard, Qualified

ANALYST: 刘璇

QC MANAGER: 郭华

INSPECTOR: 郭盛强

第 1 / 1 页

<http://www.bloomtech.com/>

